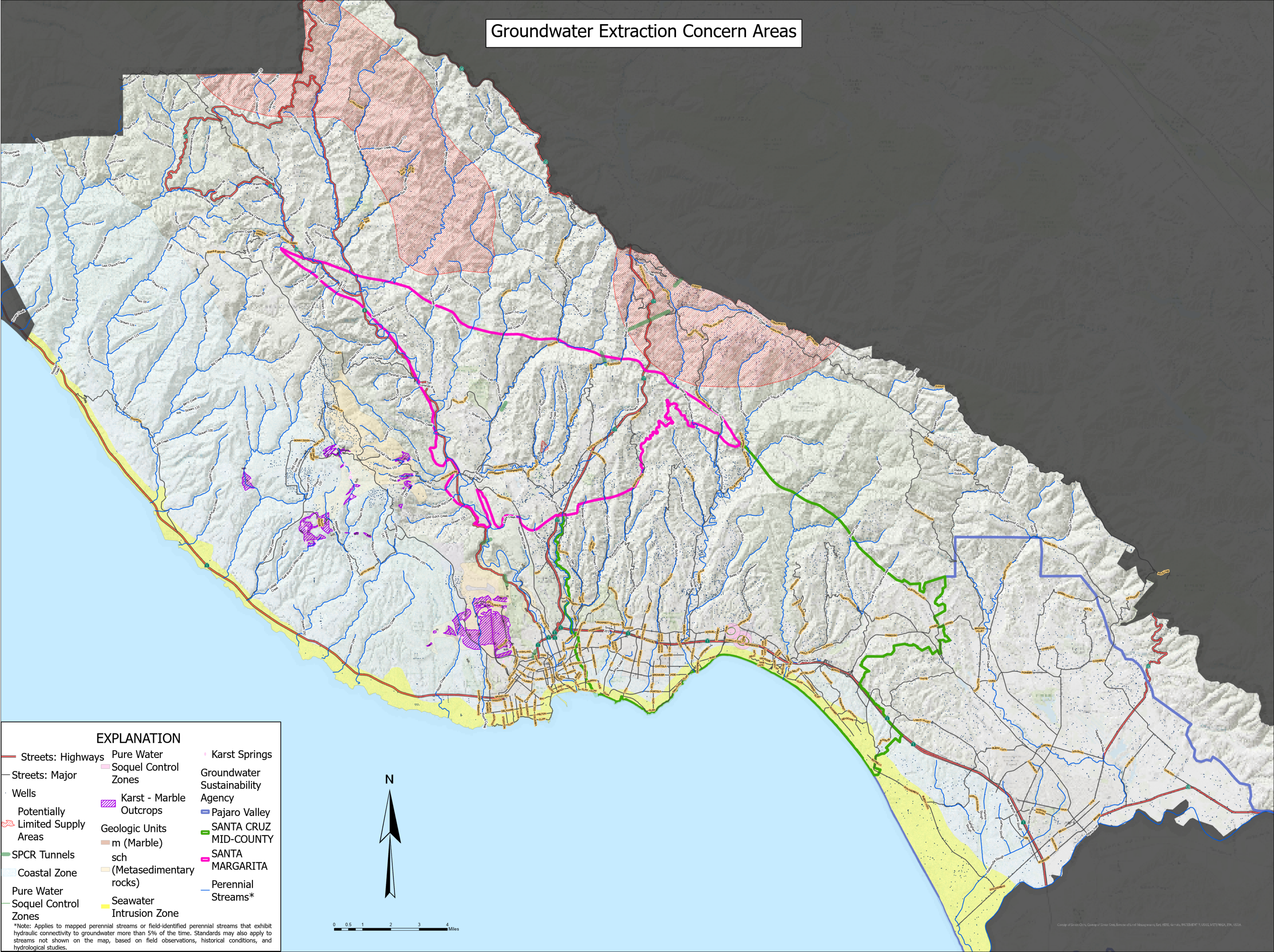
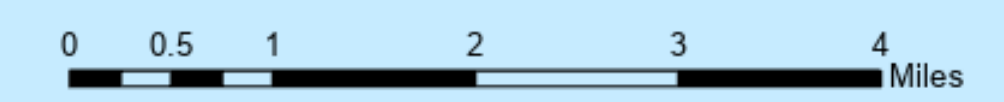


# Groundwater Extraction Concern Areas



## EXPLANATION

- Streets: Highways
- Streets: Major
- Wells
- ⚡ Potentially Limited Supply Areas
- SPCR Tunnels
- Coastal Zone
- Pure Water Soquel Control Zones
- Karst Springs
- Groundwater Sustainability Agency
- Pajaro Valley
- SANTA CRUZ MID-COUNTY
- SANTA MARGARITA
- Perennial Streams\*
- Pure Water Soquel Control Zones
- Karst - Marble Outcrops
- Geologic Units
- m (Marble sch (Metasedimentary rocks)
- Seawater Intrusion Zone



\*Note: Applies to mapped perennial streams or field-identified perennial streams that exhibit hydraulic connectivity to groundwater more than 5% of the time. Standards may also apply to streams not shown on the map, based on field observations, historical conditions, and hydrological studies.