

DRAFT Outline for Drought Response Plan

1. Introduction

- a. Summary of SB552
- b. Summary of process used to develop the plan
- c. Overview of plan/ plan organization
 - i. General outcomes
 - ii. Private wells
 - iii. Small water systems
 - iv. Emergency response
- d. Orientation to water resources in Santa Cruz County
- e. General outcomes
 - i. Maintain engagement with State and help direct resources
 - ii. Effective outreach and education is critical, and will require planning and resources
 - 1. define goals
 - 2. develop approaches that ensure inclusivity and reach all affected audiences
 - a. get assistance from experts and connected parties
 - b. ensure language accessibility
 - c. leverage existing forums
 - d. coordinate new forums, as needed
 - e. develop strategies that facilitate open communication and mitigate concerns related to County involvement
 - 3. educate
- f. County-wide water resources maps
 - i. Water quality
 - ii. DACs
 - iii. GSAs and water service areas

Maps: are we doing a general map section or maps within each section?

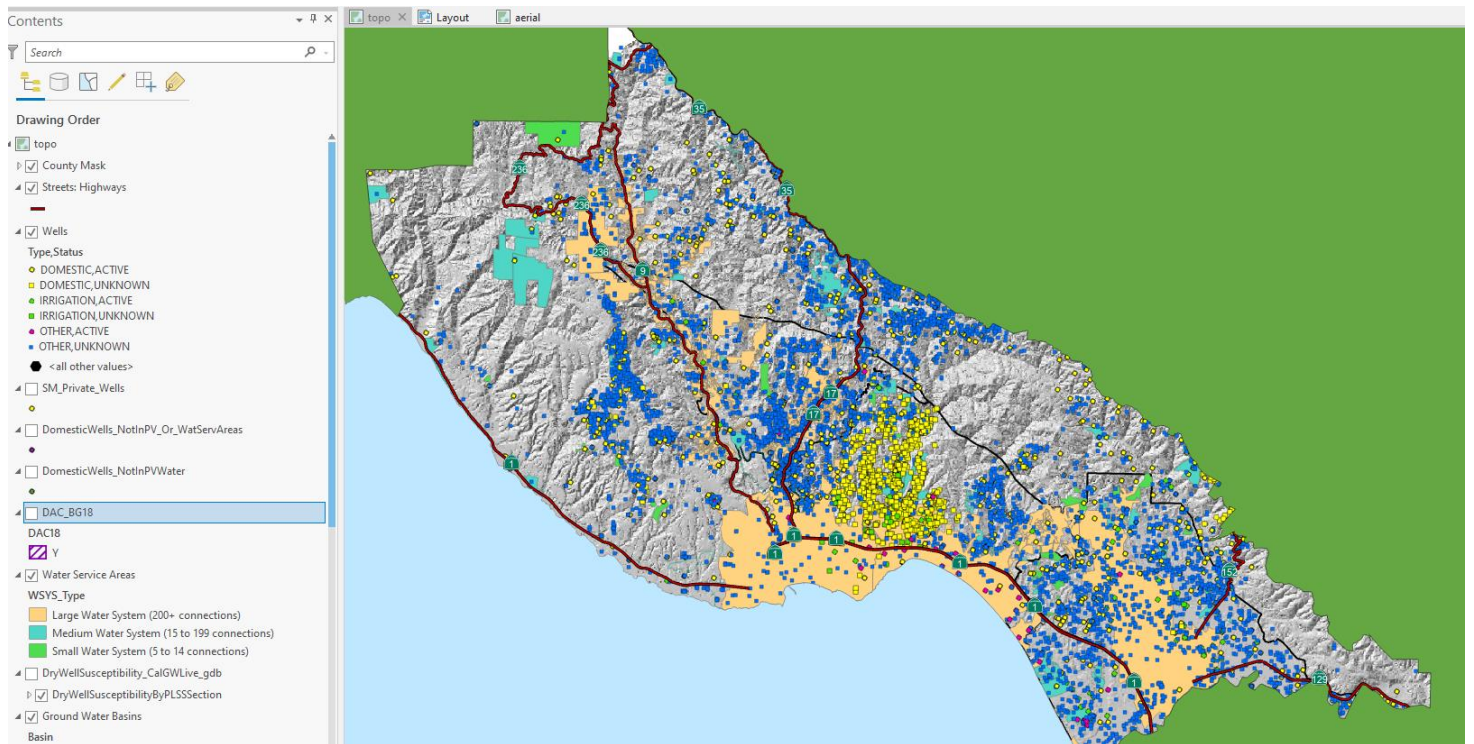
- g. GSAs, water systems, known wells –see examples attached
- h. Water quantity
 - i. Base layer: DACs, wells, and water systems
- i. Water quality
 - i. Base layer: DACs, wells, and water systems
- j. Water management layers: large water suppliers, GSAs
 - i. Base layer: wells and small water systems

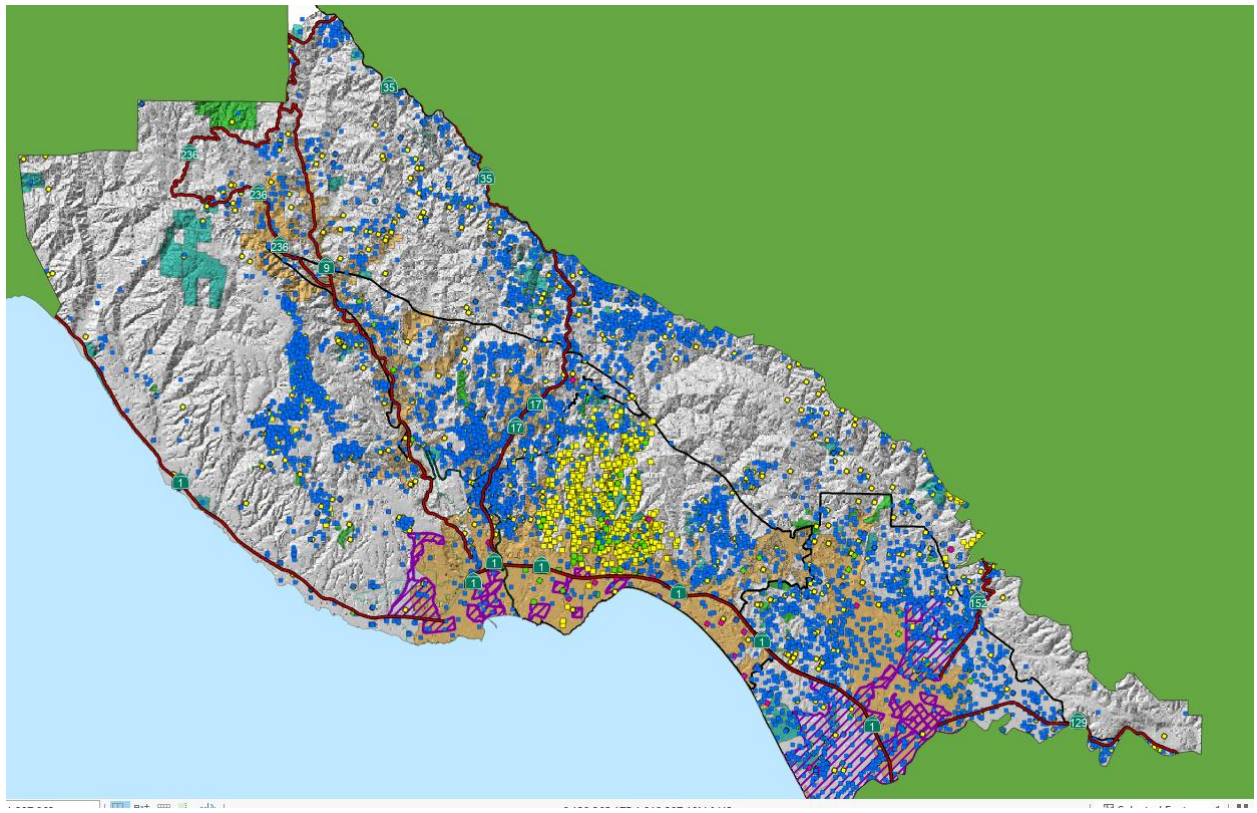
- k. Areas of concern
 - i. Describe problems in area of concern
 - l. All the rest in the appendix – raster maps in the back
- 2. Private wells
 - a. Summary of private well dependence in County
 - i. Data available
 - 1. Numbers of wells and households
 - 2. Geographic variability
 - 3. Demographic variability
 - 4. Data gaps
 - b. Priority areas
 - i. Discussion of water quality and water supply problems
 - ii. Maps
 - 1. Domestic well service area
 - 2. Water quality
 - 3. Water quantity
 - 4. DACs
 - c. Outreach strategy
 - i. Goals
 - ii. Develop outreach strategies
 - 1. Mailers, workshops, website
 - d. Private well mitigation strategies
 - i. Make resources accessible
 - 1. How to register dry well
 - 2. Water hauling
 - 3. Water quality testing
 - 4. Well soundings
 - ii. Interim and permanent mitigation strategies table
 - e. Funding solutions for private wells
 - i. Coordination between County and State
 - ii. Current Urgent Drinking Water grant
- 3. Small water systems
 - a. Summary of small water systems in County
 - i. Data available
 - 1. Numbers of systems and households
 - 2. Geographic variability
 - 3. Demographic variability
 - 4. Data gaps
 - b. Priority areas
 - i. Discussion of water quality and water supply problems
 - ii. Concern based on reserve funds (ability to meet SB 552 requirements)

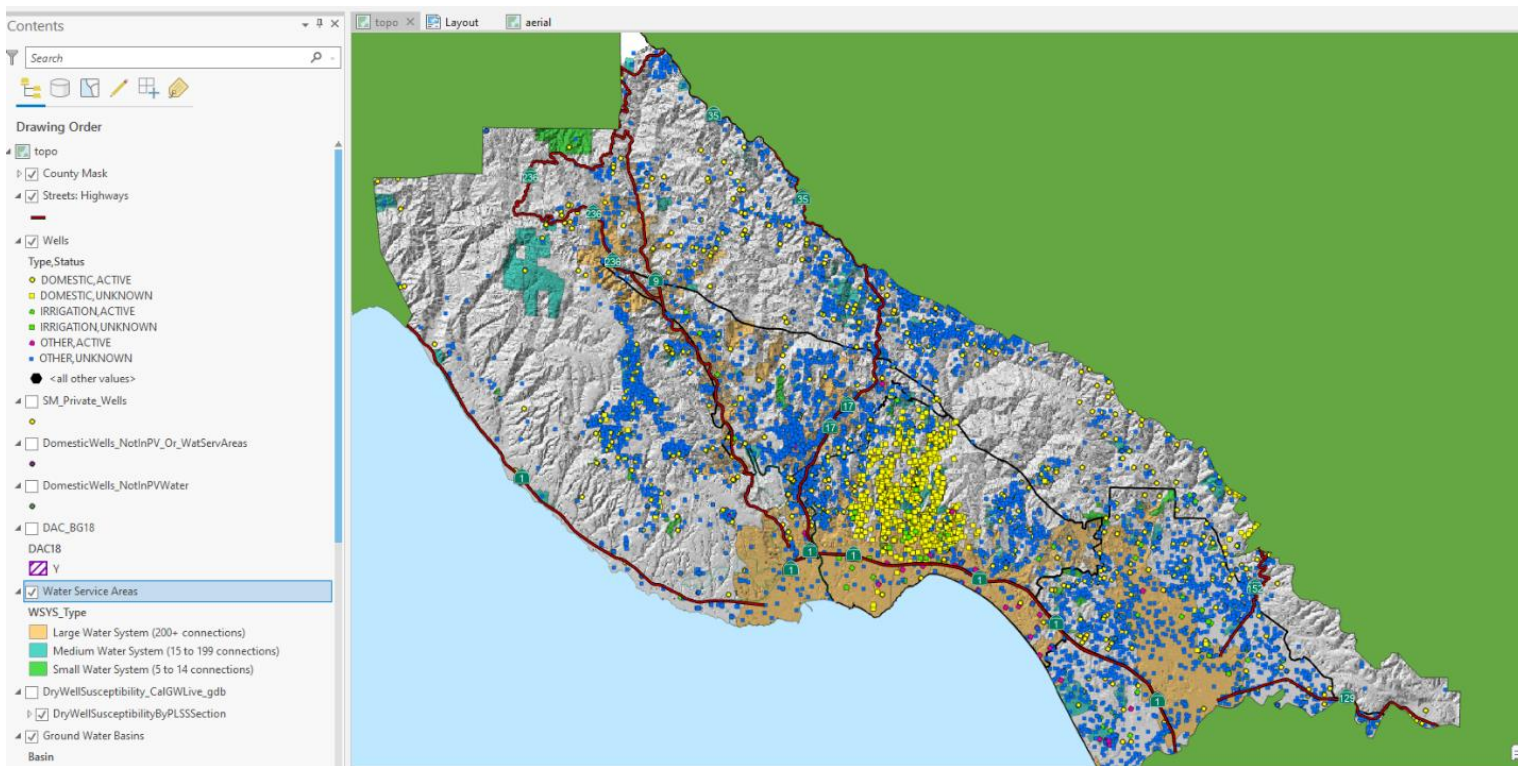
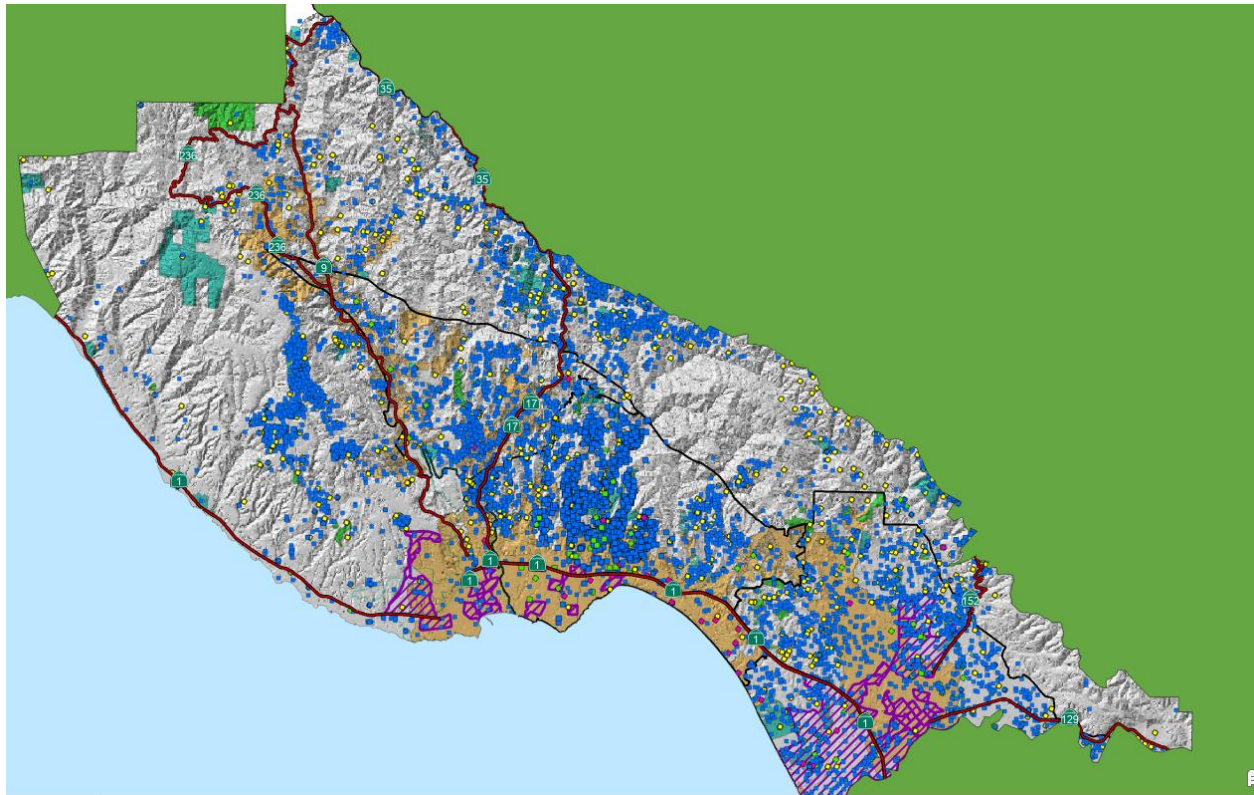
- iii. Maps
 - 1. Small water system service area
 - 2. Water quality (upcoming standards)
 - 3. Water quantity (including fire flow)
 - 4. DACs
 - c. Outreach strategy
 - i. Goals
 - ii. Develop outreach strategies
 - 1. Water system forums (existing)
 - 2. Ongoing emails and web page updates
 - d. Mitigation strategies
 - i. Interties with large systems or other small systems
 - ii. Consolidations with large systems or other small systems
 - iii. Make resources accessible
 - 1. Reserve fund building resources
 - 2. Decision-support tool
 - 3. Flow charts
 - 4. How to register dry well
 - 5. Water hauling
 - 6. Water quality testing
 - 7. Well soundings
 - iv. Interim and permanent mitigation strategies table
 - e. Funding solutions for small water systems
 - i. Rate changes
 - ii. Support accessing and administering grants and low interest loans
 - iii. Other strategies
- 4. Emergency response
 - a. Summary of disasters that can impact water supplies
 - i. Fire
 - ii. Drought
 - iii. Flood
 - iv. Landslide
 - v. Earthquake
 - b. County role during the emergency
 - i. Facilitating hauled water
 - ii. Water quality testing
 - c. County role in recovery
 - i. Help with FEMA forms
 - ii. Facilitate interties
 - iii. Facilitate grant funding
 - d. Outreach strategy

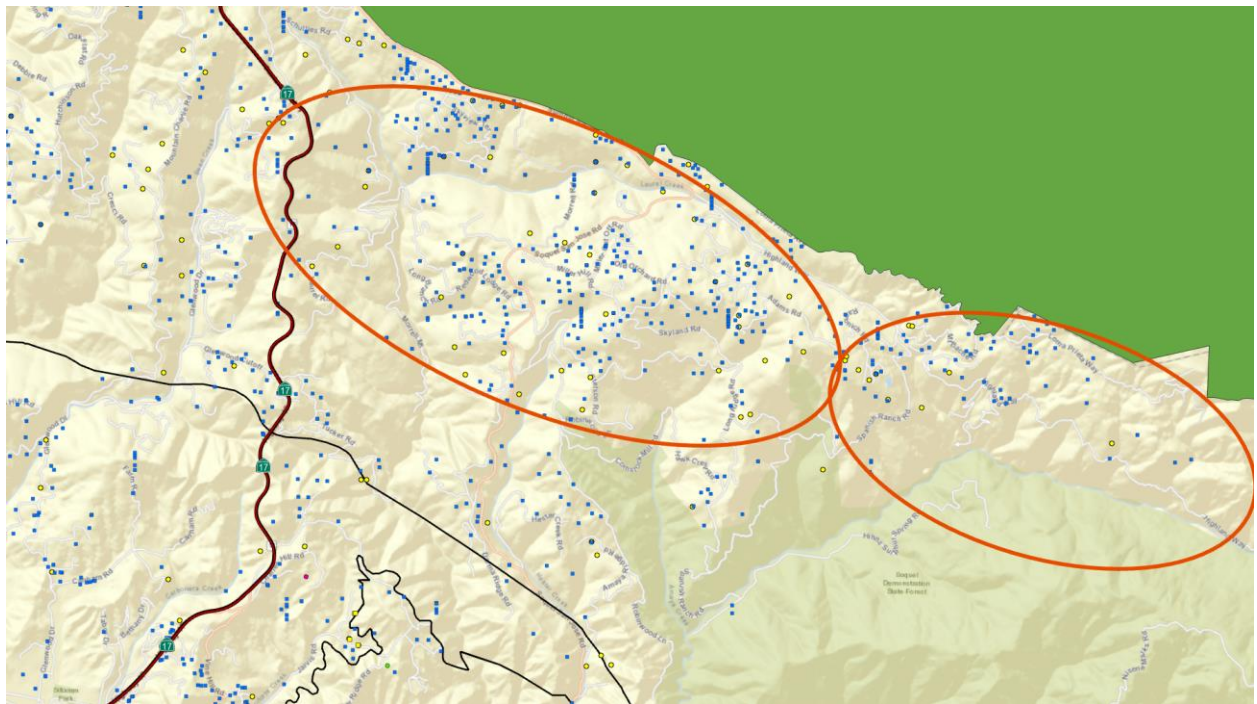
- i. Goals
 - ii. Develop outreach strategies
 - 1. Website
- e. Long term mitigation strategies
 - i. Investigate options for long-term resiliency
 - 1. Purchasing water hauling truck
 - 2. MOUs with municipal suppliers for water hauling
 - 3. Decentralized water storage
- f. Funding solutions for emergencies
 - i. FEMA money (after a disaster)
 - ii. Hazard Mitigation Funding
 - iii. Reserve funds

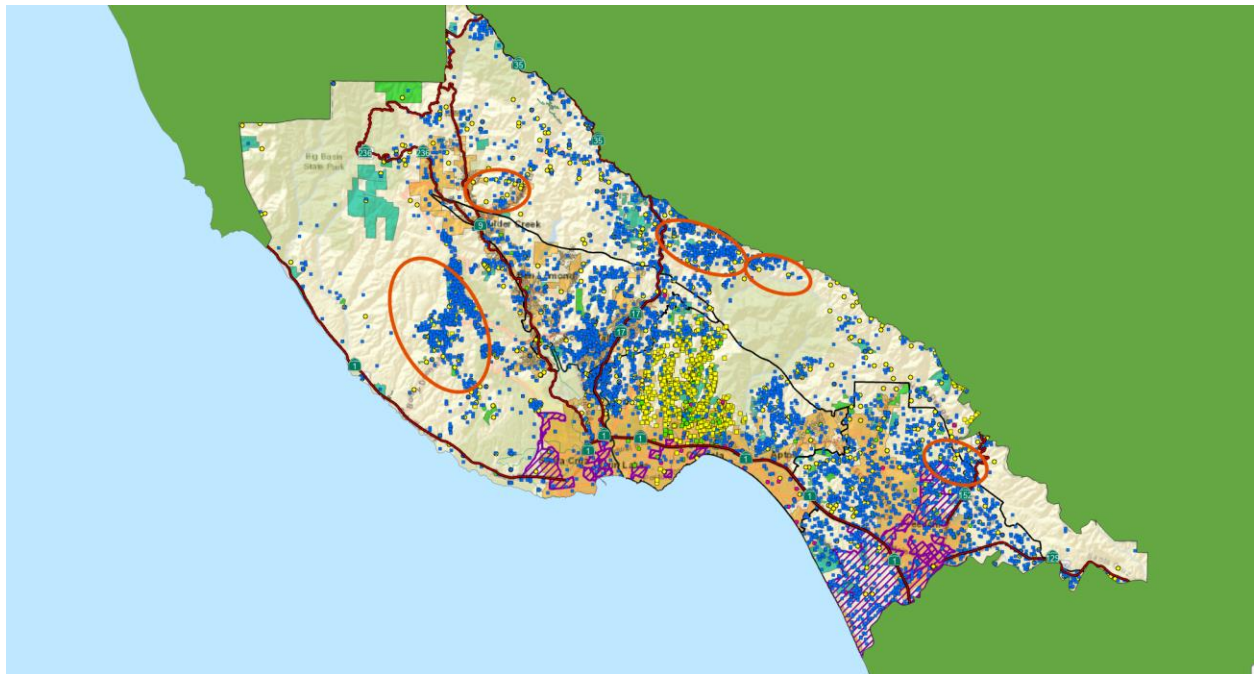
Example maps



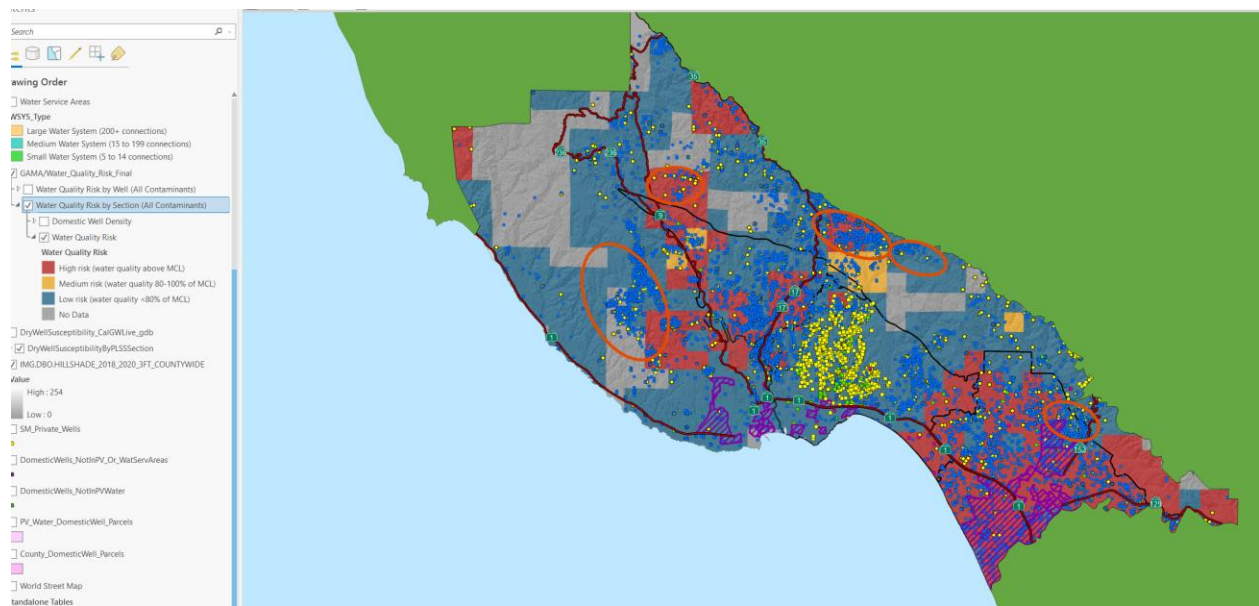








Water quality risk:



Dry well susceptibility:

